



[Powering Possibilities]

POWERING POSSIBILITIES, DRIVEN BY A DREAM

MIKE MCBRIDE || CEO

Back in 1938, a group of hard-working farmers and ranchers came together with a dream — a dream of powering possibilities. The realization of that dream began to be fulfilled in 1941. Back then it meant life could become a little easier. It meant light to study and work by after the sun went down. It meant some chores like washing clothes could take less time and effort.

A lot has changed in the past 76 years, but one thing has not changed. At Gunnison County Electric Association, we are still driven by that dream. To be sure, providing the power that drives today's vast array of appliances, devices and tools remains at the core of that dream. Today we hold the world in our hands because of electricity.

But our dream of powering possibilities is not limited to the benefits derived from safe, reliable and affordable electricity. A number of new initiatives have been undertaken to power possibilities through choices available to you.

In 2017 we rolled out a new option for your annual patronage capital allocation. You can either receive the current value of your allocation or leave it invested in your cooperative. We are also working on another patronage capital offering for 2018 that will provide even greater choice with respect to your ownership equity in GCEA.

With respect to rates, the board opted to delay the 2017 rate



Mike McBride

increase until May 1 to minimize the impact of the increase on you. I am happy to report that for 2018 there will be no rate increase at all. We also rolled out a new rate offering in the form of an optional time-of-use rate that gives you even greater control over your monthly bill and another way to save money.

During the year we reduced our green power premium by more than 50 percent, and with some marketing we saw a 75 percent increase in participation. And now, 25 percent of your green power premium will go into a fund to support the development of local renewable energy. You can

also help the environment by opting for paperless billing or by taking advantage of our energy efficiency rebates.

With respect to billing and payment options, you now have more secure ways to pay your bill than ever before. A few members even took advantage of our new prepaid billing option and they love it. Prepaid billing truly puts members in charge of their usage and payments.

To learn more about the many choices and possibilities available to you, please contact a member support

specialist by calling 970-641-3520 or visit www.gcea.coop.

With new technologies coming all the time we will have many more opportunities to continue living the dream. Here's to new possibilities.



Electrification and living the dream in Gunnison County started 76 years ago.

HAPPY NEW YEAR
FROM THE STAFF AT GCEA

GO GREEN IN 2018



ENERGY AUDITS

**Make a New Year's resolution to be more energy efficient!
Sign up for a free energy audit today!**

GCEA offers free energy audits to residential and small commercial members. We can help you identify how much energy your appliances, electronics and lighting use and how they contribute to your electric bill. Call Alantha, energy use specialist, at 970-641-3520 today.



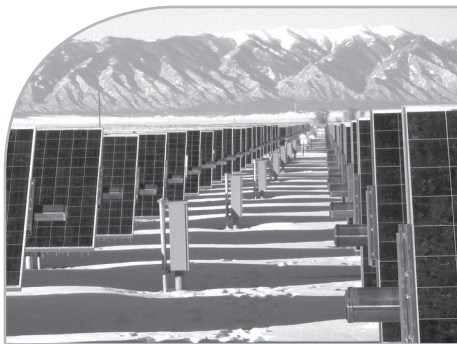
PAPERLESS BILLING

Paperless billing is a win-win situation for everyone. It's easy and convenient for you, saves your co-op money and helps the environment by reducing paper waste. Members who are not already participating in paperless billing and sign up during 2018 will be entered into our paperless billing contest.

Log on to <https://gcea.smarthub.coop>. If you do not already have a user name and password, you will need to create one.

Once you are logged in, click on "My Profile," then "Update My Printed Bill Settings" and select "Turn Off Printed Bill Status." If you have any questions, please give GCEA a call at 970-641-3520.

Each fiscal quarter, GCEA will hold a drawing for members signing up for paperless billing for the first time during that quarter. The lucky winner will receive a \$100 Visa gift card.



MAKE A CHANGE WITH A LITTLE CHANGE

Gunnison County Electric Association offers members the chance to buy blocks of green power to offset their usage and support renewable energy for an additional cost of 12 cents per 100 kilowatt-hour block. The program also allows members to offset 100 percent of monthly usage with green power. With this option, the

green power fee will be calculated each month based on kWh usage.

Join more than 500 members in the Green Power Program.

For more information on the Green Power Program, please call GCEA at 970-641-3520.

LAST CALL FOR SCHOLARSHIPS

SCHOLARSHIP APPLICATION DEADLINE IS FRIDAY, FEBRUARY 2, 2018, by 4:30 P.M.

Do you need financial assistance to help further your education after high school? Each year college gets harder and harder to pay for, but GCEA is here to help students pursue their dreams of furthering their education. Last year, 68 students received scholarships. Applications are available at the Gunnison and Crested Butte offices, all three local high schools and online at www.gcea.coop.

Returning college applicants must fill out and send in the returning student application form with current college transcripts.

NIGHT OF LIGHTS

GCEA has another successful night of lights. The theme for the display was The Polar Express. Thanks to all the hard work of the employees, GCEA won first place for best night of lights installation.



LINEWORKER SCHOOL



GCEA offers scholarships for students planning to pursue a career in the electrical industry. For more information on the line-worker scholarship, please contact GCEA at 970-641-3520 or visit www.gcea.coop.

EMPLOYEE ANNIVERSARIES

Marcia Wireman, Chief Financial Officer

— 22 years

Bruce Stephens, Staff Engineer — 6 years

Logan Rhodes, Lake City Lineman — 4 years

Have you checked your mail?

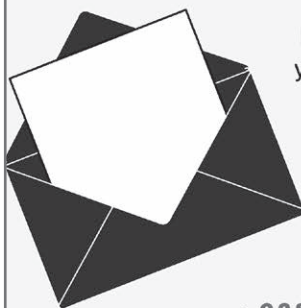
GCEA members, did you receive your patronage capital certificate in the mail? In October 2017, GCEA mailed certificates to our members, which give you a choice.

If you were a member who received electric service from GCEA in 2016, you should have received a certificate representing your share of the 2016 patronage capital allocation (your ownership in GCEA).

This certificate may be:

- held as an investment in GCEA
(Increasing in value each year)
or

- cashed in immediately at a discounted rate



FOR MORE INFORMATION,
PLEASE CONTACT GCEA AT 970-641-3520 OR 1-800-726-3523.

*CERTIFICATES WILL BE ISSUED ONLY TO MEMBERS WHO WERE ALLOCATED 2016 PATRONAGE CAPITAL OF \$26.01 OR MORE.

2018 REBATE INFORMATION

RESIDENTIAL AND SMALL COMMERCIAL LED LIGHTING REBATES

Gunnison County Electric Association and Tri-State Generation and Transmission offer rebates for LED lightbulbs and fixtures with LED lighting built in for residential and small commercial use within our service area. GCEA members are eligible to receive a rebate of 50 percent of the LED cost up to a maximum of \$8 per bulb or fixture (not including any shipping or taxes). LED bulbs must be 500 lumens or greater. Qualified applicants may apply for rebates for a maximum of 50 bulbs and/or fixtures per member account each year for installation within GCEA's service area. Qualifying Energy Star® equipment can be found at www.energystar.gov.

COMMERCIAL LIGHTING REBATES

Gunnison County Electric Association and Tri-State Generation and Trans-

mission offer incentives for member businesses to retrofit existing lighting systems with newer, energy-efficient systems, and for installing LED lighting in new construction. Rebates are available for fixtures within buildings and parking garages, canopy lighting, "wall packs" mounted to the outside of buildings and refrigerated case lighting. The following programs have different rebate amounts and requirements and are based on preset amounts by fixture types, with caps on rebate amounts. Contact GCEA for more information.

- **COMMERCIAL LIGHTING RETROFIT REBATE**
- **NEW CONSTRUCTION LED LIGHTING REBATE**
- **POLE MOUNTED LED LIGHTING REBATE**
- **REFRIGERATED CASE LIGHTING REBATE**

Visit www.gcea.coop and click on Energy Efficiency or call 970-641-3520 for information.

GCEA ENERGY EFFICIENCY REBATE PROGRAM

GCEA partners with Tri-State Generation and Transmission Association to offer the following energy efficiency rebates to members. Members may receive rebates for any of the energy efficiency measures listed in the table below.

SYSTEM OR APPLIANCE	REBATE AMOUNT
LED Light bulbs and Fixtures with LED Lighting Built In Multi-LED light sources like rope-light, LED troffers or under-counter	50% of the cost of the bulb or fixture up to a maximum of \$8/bulb or fixture Bulbs must be 500 lumens or greater Maximum of 50 bulbs per member account per year
Refrigerators or Freezers over 7.75 ft3	\$110 for new Energy Star® rated appliance With mandatory recycling of old appliance
Clothes Washers	\$60 for new Energy Star® rated front load \$50 for new Energy Star® rated top load
Electric Clothes Dryers	\$30 for new Energy Star® appliance \$90 for new hybrid heat pump appliance (ventless)
Dishwashers	\$35 for new Energy Star® rated appliance
Electric Water Heaters (30 to 55 gallon only)	\$50 per unit Additional \$20 per unit for lifetime tank warranty (e.g., Marathon)
Heat Pump Water Heaters Energy Star® rated residential unit or any commercial installation	\$370 per unit for primary heating by direct exchange with semi-conditioned room air
Air Source Heat Pump Water Heater 30 gallon minimum	\$120 per unit for primary heating by direct exchange ground source or heat pump waste heat Additional \$25 per unit for lifetime tank warranty (e.g., Marathon)
Ground Source Heat Pump Water Heater Any size qualifies	\$22 per kW for ETS controlled by timer or master control system Minimum qualifying load 1 kW for ETS \$18 per kW for slabs controlled by timer or master control system
Electric Thermal Storage and Thermal Slab (Permanently installed units only)	
Electric Heat Pump: Central Ground Source Minimum ¾ ton (9,000 Btuh)	\$500 per ton

All rebates above must be requested within 120 days of installation.

*Exceptions to this rule include refrigerator installation in new building construction or when a home or business is purchased and a refrigerator was not present in the home or business. In this event, the incentive amount is \$50.

Visit www.gcea.coop and click on Energy Efficiency or call 970-641-3520 for information.